



# Using your Guardian benefits

Tools that can make it easy and convenient to use your benefits anytime, anywhere.

Guardian is committed to making it as easy as possible for you to use and understand your benefits, with customer service you can depend on.

## Find a provider online

- Go to [guardianlife.com](https://guardianlife.com)
- Simply click on Find a Provider under the Resource section in the footer
- Follow the easy steps to search for a provider

## View/print your ID card at Guardian Anytime

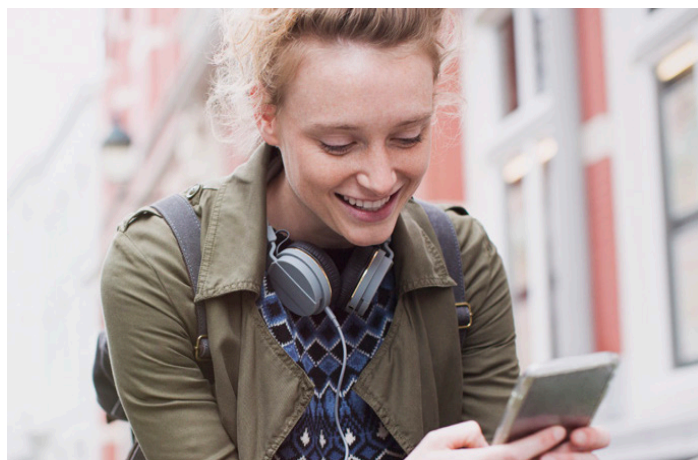
- Have your Guardian Member ID available when visiting your doctor's office.
- If you don't have a printed copy of your member ID card, visit the Forms and Materials section of [guardianlife.com/login](https://guardianlife.com/login) — it's fast and easy.

## Access to an array of tools

- Guardian Anytime includes easy-to-use tools to help understand the value of your benefits. This includes educational articles and dental cost estimator tools.
- Additional vision tools can be found by clicking the vision button for the View My Plan Benefits and Coverage page.

## Real-time assistance

- Connect with a Guardian representative about your benefits and claims for help using [guardianlife.com](https://guardianlife.com).



## Find a provider and ID cards from your phone or tablet:

Guardian's Find a Provider and ID card app is available through iTunes and Google Play.

- Find a Dental or Vision Provider
- Access to your ID card

Register or sign in:

